



THIS MAP WAS PREPARED FOR TAX PURPOSES ONLY AND IS NOT TO BE REPRODUCED OR USED FOR SURVEYING OR CONVEYANCING.

PREPARED BY
MUNTOSH & MONTOSH, LAND SURVEYORS
 BUFFALO, NEW YORK
 UNDER AUTHORITY OF
 GENESSEE COUNTY BOARD OF SUPERVISORS
Data collected by GIS/Mapping Section, August 2016, for Parcel Mapping
 Map created using GIS/Map, Copyright 2017, Bergmann Associates

REVISION TABLE		
DATE	MADE BY	CHANGES OR ADDITIONS
07/25/2012	JRG	SPLIT 5-1-19-111 INTO 5-1-19-113, 24 & 25
09/07/2012	JRG	MERGE 5-1-19-2 & 24 INTO 5-1-19-21
09/07/2012	JRG	MERGE 5-1-19-112 & 25 INTO 5-1-19-114
04/18/2017	JRG	MERGE 5-1-3, 7 & 12 INTO 5-1-3.1

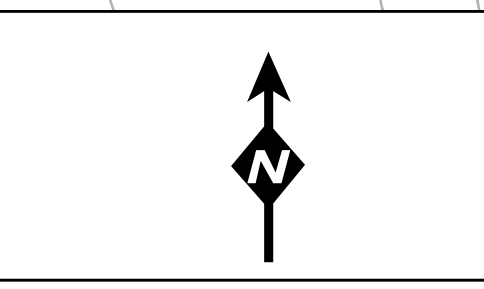
REVISION TABLE		
DATE	MADE BY	CHANGES OR ADDITIONS

SPECIAL DISTRICTS	
FIRE	LERROY FIRE DISTRICT
SCHOOL	LERROY CENTRAL
WATER	VILLAGE WATER DISTRICT

PROPERTY LINE	
—	ORIGINAL LOT LINE
—	RAILROAD
—	STREAM OR DITCH
—	ROAD OR RAILROAD BNDY
—	BLOCK LIMIT
—	GREAT LOT LINE
—	DENOTE COMMON OWNER

LEGEND	
—	SCHOOL DISTRICT LINE
—	FIRE DISTRICT LINE
—	WATER DISTRICT LINE
—	SEWER DISTRICT LINE
—	EASEMENT

TAX MAP BLOCK No	
43-14-11	43-14-11
14	14
8	8
7.9 A (C)	7.9 A (C)
17.5 A	17.5 A
226 (B)	226 (B)
173.5	173.5



TAX MAP
 VILLAGE OF LEROY
 GENESSEE COUNTY, NEW YORK

GRAPHIC SCALE
 1" = 100'