

THIS MAP WAS PREPARED FOR TAX PURPOSES ONLY AND IS NOT TO BE REPRODUCED OR USED FOR SURVEYING OR CONVEYANCING.

PREPARED BY
McINTOSH & McINTOSH, LAND SURVEYORS
 BATAVIA, NEW YORK
 UNDER AUTHORITY OF
GENESEE COUNTY BOARD OF SUPERVISORS
Data converted to digital format August 2004, by Water Mapping
 Map created using GCPM, Copyright 2007, Esri/Map Associates

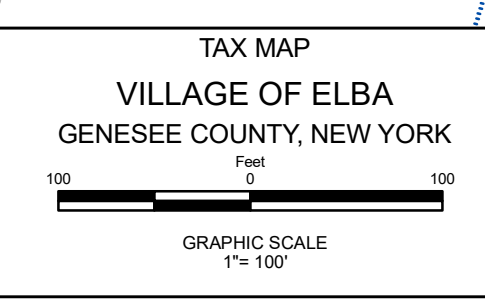
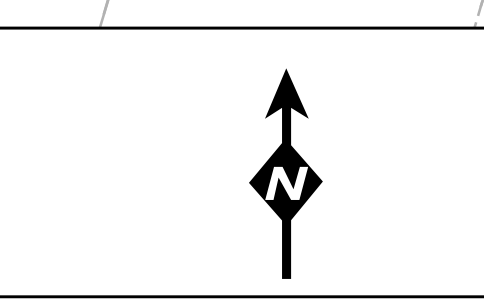
REVISION TABLE		
DATE	MADE BY	CHANGES OR ADDITIONS
11/18/2015	JRG	MERGE 7-1, 5, 2 & 12 INTO 7-1-12.1
11/28/2022	JRG	SPLIT 7-1-5, 115 INTO 7-1-13, 14, 15 & 16

SPECIAL DISTRICTS	
FIRE	ELBA FIRE PROTECTION DISTRICT
SCHOOL	ELBA CENTRAL
WATER	VILLAGE WATER DISTRICT

LEGEND	
PROPERTY LINE	---
ORIGINAL LOT LINE	- - - -
RAILROAD	+ + + +
STREAM OR RAILROAD BNDY	~ ~ ~ ~
ROAD OR RAILROAD BNDY	— · — ·
BLOCK LIMIT	— · — · — ·
GREAT LOT LINE	— · — · — · — ·
DENOTE COMMON OWNER	⊥

LEGEND	
SCHOOL DISTRICT LINE	— · — · — · — ·
FIRE DISTRICT LINE	— · — · — · — ·
WATER DISTRICT LINE	— · — · — · — ·
SEWER DISTRICT LINE	— · — · — · — ·
EASEMENT	— · — · — · — ·

TAX MAP BLOCK No	①
TAX MAP PARCEL No	43-14-11
FILED PLAN LOT No	14
GREAT LOT No	(9)
CALCULATED ACREAGE	7.5 A (C)
DEED ACREAGE	17.5 A
SCALED DIMENSION	225 (8)
DEED DIMENSION	173.8



TAX MAP
 VILLAGE OF ELBA
 GENESEE COUNTY, NEW YORK

SECTION 7-1

The -1 indicates this map displays Block 1 of this Map Section only.

MAP DATE: March 2024