



THIS MAP WAS PREPARED FOR TAX PURPOSES ONLY AND IS NOT TO BE REPRODUCED OR USED FOR SURVEYING OR CONVEYANCING.

PREPARED BY
MUNTOSH & MONTOSH, LAND SURVEYORS
 BERGEN, NEW YORK
 UNDER AUTHORITY OF
 GENESEE COUNTY BOARD OF SUPERVISORS
Data collected by Global Positioning System, August 2014, for Parcel Mapping.
 Map created using GISPro, Copyright 2017, Bergmann Associates

REVISION TABLE		
DATE	MADE BY	CHANGES OR ADDITIONS

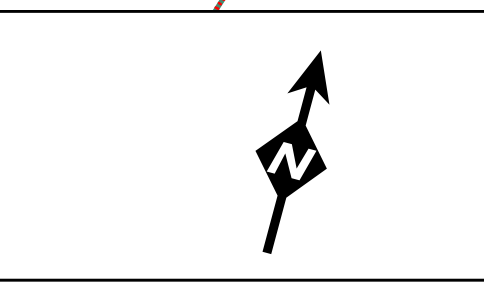
REVISION TABLE		
DATE	MADE BY	CHANGES OR ADDITIONS

SPECIAL DISTRICTS	
FIRE	BERGEN FIRE DISTRICT
SCHOOL	BYRON-BERGEN CENTRAL
WATER	VILLAGE WATER DISTRICT

PROPERTY LINE	---
ORIGINAL LOT LINE	- - - -
RAILROAD	====+====
STREAM OR DITCH	~~~~~
ROAD OR RAILROAD BNDY	==+==
BLOCK LIMIT	---
GREAT LOT LINE	---
DENOTE COMMON OWNER	---

LEGEND	
SCHOOL DISTRICT LINE	---
FIRE DISTRICT LINE	---
WATER DISTRICT LINE	---
SEWER DISTRICT LINE	---
EASEMENT	---

TAX MAP BLOCK No.	43-14-11
TAX MAP PARCEL No.	14
FILED PLAN LOT No.	39
GREAT LOT No.	7.8 A (C)
CALCULATED ACREAGE	179.6
DEED ACREAGE	228.09
SCALED DIMENSION	173.5
DEED DIMENSION	



TAX MAP
 VILLAGE OF BERGEN
 GENESEE COUNTY, NEW YORK

GRAPHIC SCALE
 1" = 100'