

# TAX MAP INDEX

TAX MAP SCALE: SEE SCALE ON EACH SECTION MAP

NUMBERING OF PARCELS:

EACH TOWN IN THE COUNTY OF GENESEE HAS BEEN DIVIDED INTO "SECTIONS" DESIGNATED THUS - (6). ALL SECTIONS CONTAIN FROM TWO TO EIGHT FARM LOTS. WITHIN EACH SECTION ARE AREAS BOUNDED BY ROADS, RAILROADS, WATERWAYS OR OTHER NATURAL BOUNDARIES, WHICH ARE DESIGNATED AS "BLOCKS". EACH LOT OR "PARCEL" WITHIN THE BLOCK IS NUMBERED CONSECUTIVELY, STARTING IN THE NORTHWEST CORNER OF EACH BLOCK AND PROCEEDING CLOCKWISE.

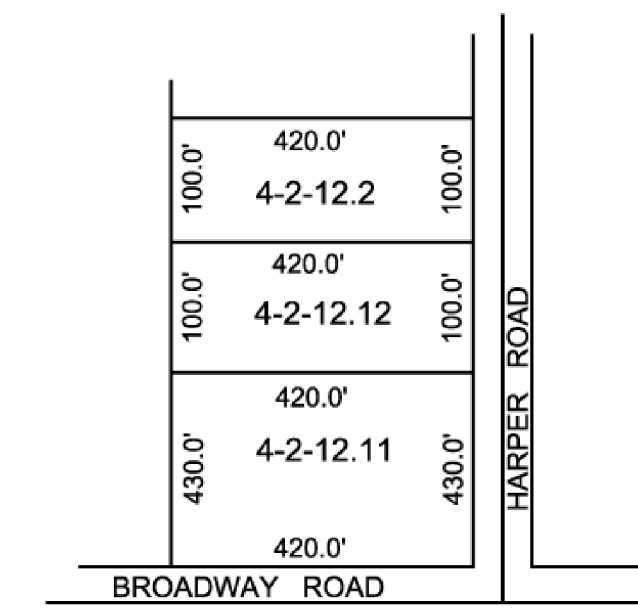
THEREFORE, THE PARCEL NUMBER FOR A SPECIFIC PROPERTY IS A COMBINATION OF THE NUMBERS OF THE SECTION, BLOCK AND PARCEL. FOR EXAMPLE, PARCEL NUMBER 4-2-12 MEANS THAT THE PROPERTY MAY BE FOUND ON SECTION MAP 4, IN BLOCK 2, AND THE SPECIFIC PARCEL NUMBER IS 12.

METHOD OF NUMBERING PARCELS WHEN LANDS ARE DIVIDED OR SUBDIVIDED:

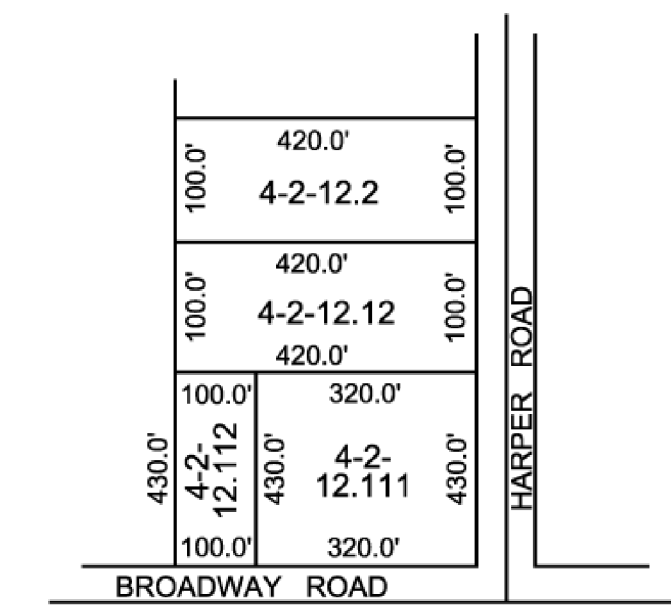


1. SAMPLE PARCEL SECTION-4, BLOCK-2, PARCEL-12.

2. WHEN A PARCEL IS DIVIDED INTO TWO PARCELS, THE PARCEL SOLD OFF BECOMES 4-2-12.2 AND THE RETAINED PORTION BECOMES 4-2-12.1.

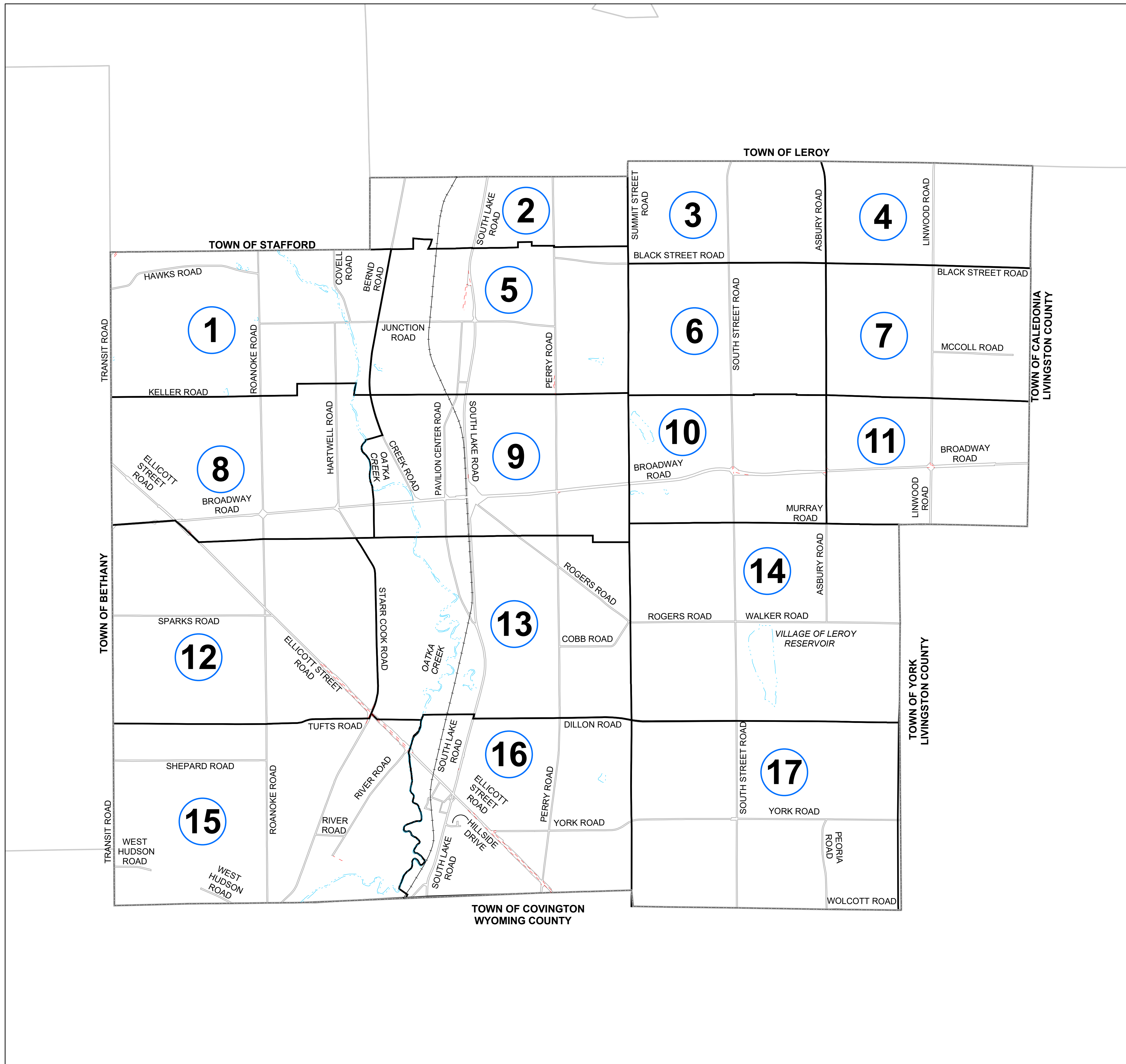


3. WHEN A PARCEL IS RESUBDIVIDED SUCH AS 4-2-12.1, THE PARCEL SOLD OFF BECOMES 4-2-2.12 AND THE RETAINED PORTION BECOMES 4-2-12.11.



4. WHEN SUBSEQUENT DIVISION TAKES PLACE, THE PARCEL RETAINED IS ALWAYS NUMBERED WITH THE SUFFIX "1", WHILE THE SOLD OFF PARCEL IS SUFFIXED STARTING WITH "2" & NUMBERING UP CONSECUTIVELY.

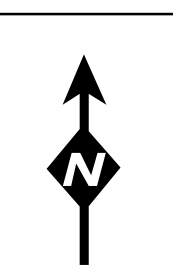
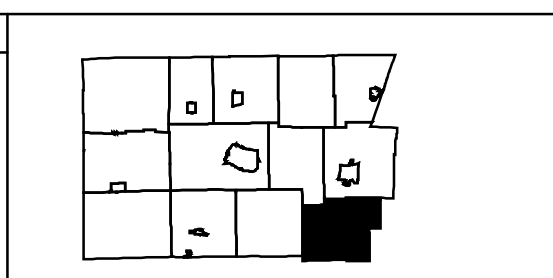
5. IF A PARCEL IS MADE INTO A "SUBDIVISION" CONTAINING MANY LOTS, A NEW BASE NUMBER IS GIVEN TO EACH LOT RATHER THAN USING THE PROCEDURE EXPLAINED ABOVE.



THIS MAP WAS PREPARED FOR TAX PURPOSES ONLY AND IS NOT TO BE REPRODUCED OR USED FOR SURVEYING OR CONVEYANCING.  
 PREPARED BY  
**McINTOSH & McINTOSH LAND SURVEYORS**  
 BATAVA, NEW YORK  
 UNDER AUTHORITY  
 OF  
**GENESEE COUNTY BOARD OF SUPERVISORS**  
Data converted to digital format August 2004, by Water Mapping  
 Map created using GIS/Map. Copyright 2007, Esri/Map Associates.

**LEGEND**

- RAILROAD
- STREAM OR DITCH
- ROAD OR RAILROAD BNDY
- MUNICIPAL BOUNDARY
- MAP SECTION
- EASEMENT



TAX MAP  
 TOWN OF PAVILION  
 GENESEE COUNTY, NEW YORK  
 2000  
 0  
 2000  
 GRAPHIC SCALE  
 1" = 2000'

INDEX MAP  
 MAP DATE: March 2024