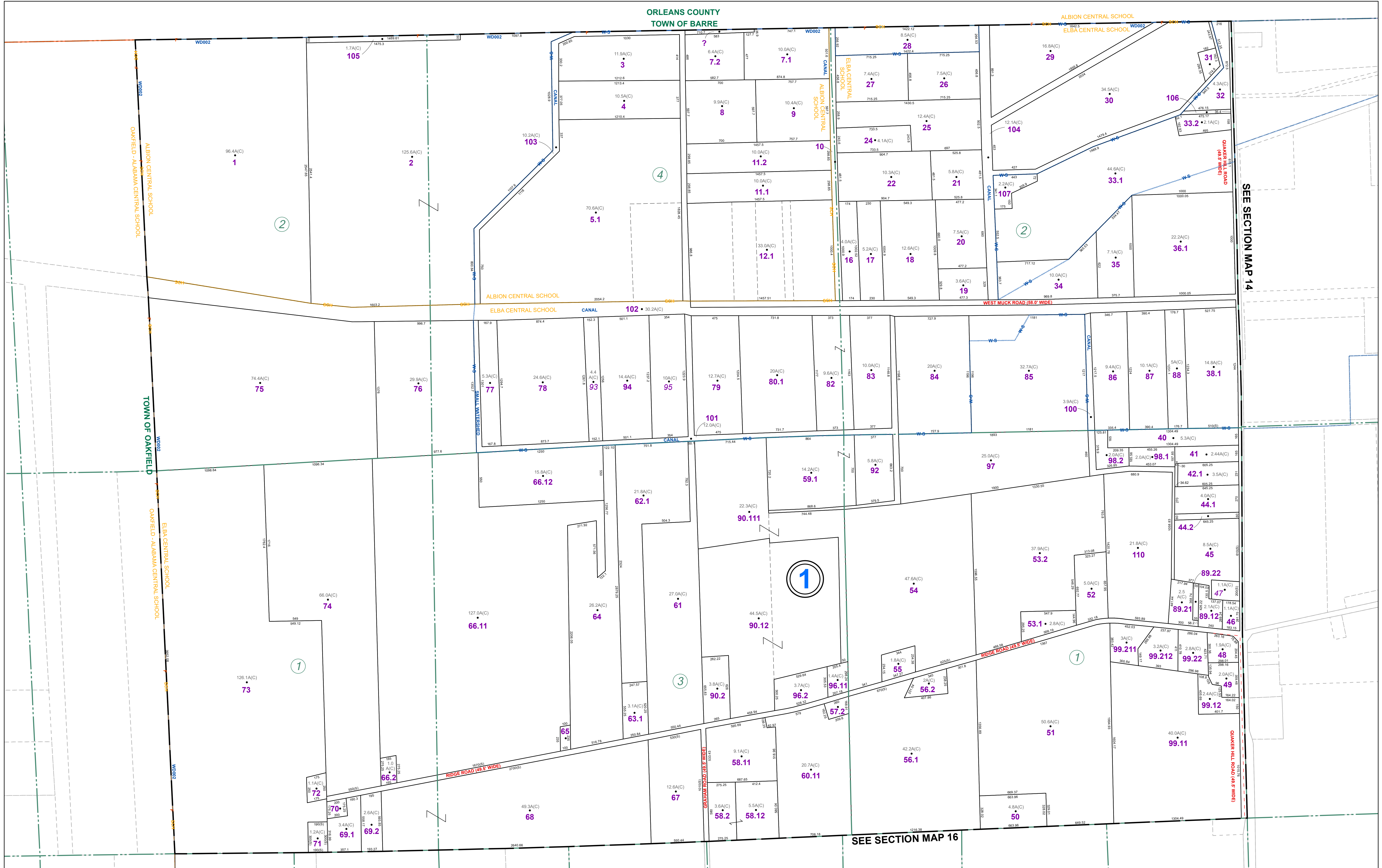


ORLEANS COUNTY
TOWN OF BARRE

ALBION CENTRAL SCHOOL
ELBA CENTRAL SCHOOL



SEE SECTION MAP 14

SEE SECTION MAP 16

THIS MAP WAS PREPARED FOR TAX PURPOSES ONLY AND IS NOT TO BE REPRODUCED OR USED FOR SURVEYING OR CONVEYANCING.

PREPARED BY
McINTOSH & McINTOSH, LAND SURVEYORS
BATAVIA, NEW YORK
LAND SURVEYORS

GENESEE COUNTY BOARD OF SUPERVISORS
Data converted to digital format August 2004, by Water Mapping
Map created using GCPM. Copyright 2007, Segment Associates

| DATE | MADE BY | CHANGES OR ADDITIONS |
|------------|---------|---|
| 04/23/2013 | JRG | SPLIT 13-1-99 INTO 13-1-98.1 & 98.2 |
| 10/28/2013 | JRG | MERGE 13-1-60.11 & 96.12 INTO 13-1-90.111 |
| 10/28/2013 | JRG | MERGE 13-1-80 & 81 INTO 13-1-80.1 |
| 10/28/2013 | JRG | MERGE 13-1-59 & 91 INTO 13-1-59.1 |
| 01/21/2015 | JRG | MERGE 57.12, 57.111, 60.1 & 109 INTO 13-1-60.11 |
| 02/05/2018 | JRG | ADD WATER DISTRICT #2 |
| 01/29/2020 | JRG | MERGE 13-1-95.111 & 89.112 INTO 13-1-110 |

| SPECIAL DISTRICTS | |
|-------------------|-------------------------------|
| FIRE | ELBA FIRE PROTECTION DISTRICT |
| SCHOOL | ALBION CENTRAL |
| | ELBA CENTRAL |
| WATER | ELBA WATER DISTRICT #2 |

| PROPERTY LINE | ORIGINAL LOT LINE |
|---------------------|-----------------------|
| WATER DISTRICT LINE | SEWER DISTRICT LINE |
| STREAM OR DITCH | ROAD OR RAILROAD BNDY |
| BLOCK LIMIT | GREAT LOT LINE |
| GREAT LOT LINE | DENOTE COMMON OWNER |

| LEGEND | |
|----------------------|---------------------|
| SCHOOL DISTRICT LINE | WATER DISTRICT LINE |
| FIRE DISTRICT LINE | SEWER DISTRICT LINE |
| WATER DISTRICT LINE | EASEMENT |

| | |
|--------------------|-----------|
| TAX MAP BLOCK No | 43-14-11 |
| TAX MAP PARCEL No | 14 |
| FILED PLAN LOT No | (9) |
| GREAT LOT No | 7.5(A)(C) |
| CALCULATED ACREAGE | 175.8 |
| DEED ACREAGE | 225 (8) |
| SCALED DIMENSION | 173.8 |
| DEED DIMENSION | |



TAX MAP
TOWN OF ELBA
GENESEE COUNTY, NEW YORK

GRAPHIC SCALE
1" = 400'