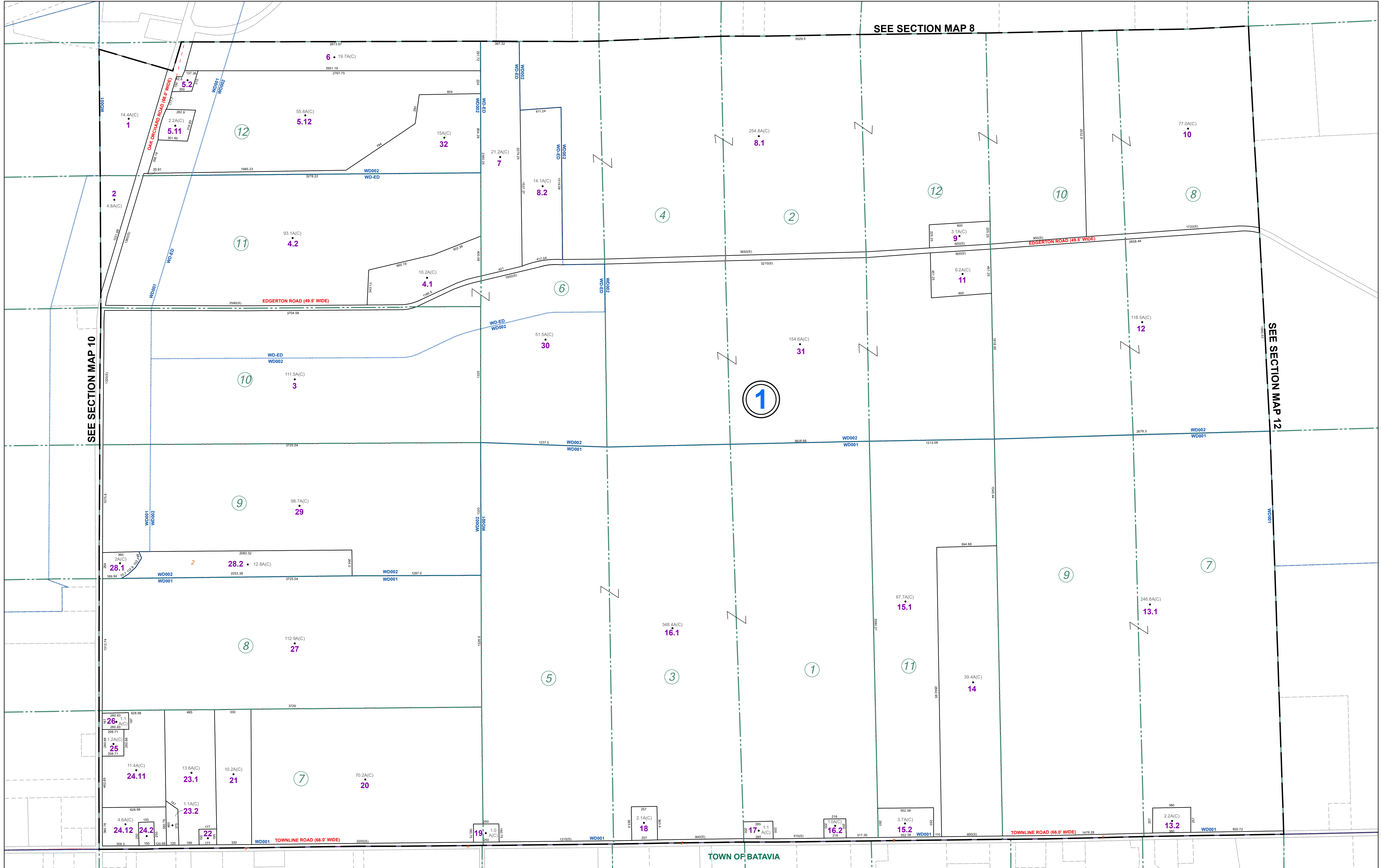


SEE SECTION MAP 8

SEE SECTION MAP 12

SEE SECTION MAP 10



TOWN OF BATAVIA

THIS MAP WAS PREPARED FOR TAX PURPOSES ONLY AND IS NOT TO BE REPRODUCED OR USED FOR SURVEYING OR CONVEYANCING.

PREPARED BY
McINTOSH & McINTOSH, LAND SURVEYORS
 BATAVIA, NEW YORK
 UNDER AUTHORITY OF
GENESEE COUNTY BOARD OF SUPERVISORS
Data converted to digital format August 2004, by Water Mapping
 Map created using GCPM, Copyright 2007, Segment Associates.

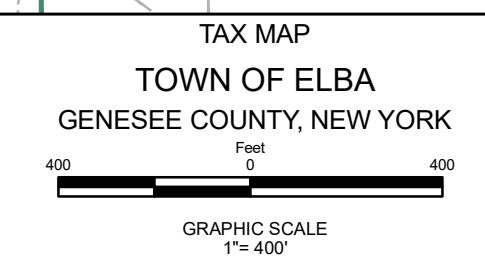
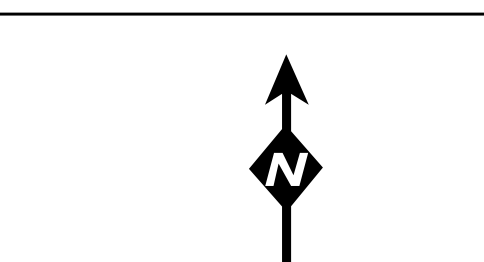
REVISION TABLE		
DATE	MADE BY	CHANGES OR ADDITIONS
12/11/2015	JRG	ADD WATER DISTRICT #1
02/05/2018	JRG	ADD WATER DISTRICT #2
02/05/2018	JRG	ADD EDGERTON ROAD WATER DISTRICT

SPECIAL DISTRICTS	
FIRE	ELBA FIRE PROTECTION DISTRICT
SCHOOL	ELBA CENTRAL
WATER	ELBA WATER DISTRICT #1
	ELBA WATER DISTRICT #2
	EDGERTON ROAD WATER DISTRICT

PROPERTY LINE	---
ORIGINAL LOT LINE	- - - - -
RAILROAD	+
STREAM OR DITCH	~ ~ ~ ~ ~
ROAD OR RAILROAD BNDY	==
BLOCK LIMIT	---
GREAT LOT LINE	---
DENOTE COMMON OWNER	L

LEGEND	
SCHOOL DISTRICT LINE	---
FIRE DISTRICT LINE	---
WATER DISTRICT LINE	---
SEWER DISTRICT LINE	---
EASEMENT	---

TAX MAP BLOCK No	①
TAX MAP PARCEL No	43-14-11
FILED PLAN LOT No	14
GREAT LOT No	(9)
CALCULATED ACREAGE	7.5 A(C)
DEED ACREAGE	17.5 A
SCALED DIMENSION	225 (8)
DEED DIMENSION	173.8



TAX MAP
 TOWN OF ELBA
 GENESEE COUNTY, NEW YORK
SECTION 11
 MAP DATE: March 2024