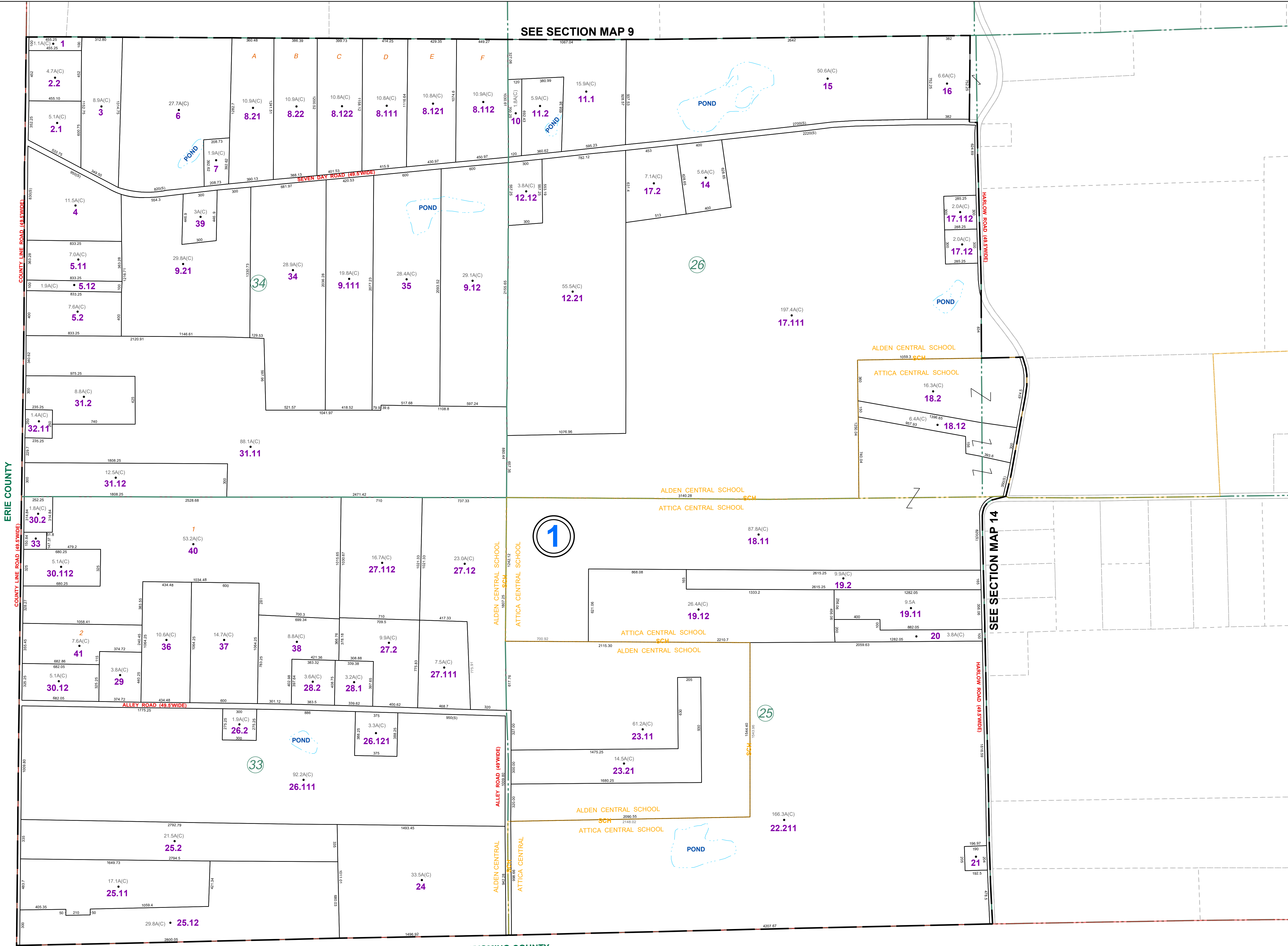


SEE SECTION MAP 9



SEE SECTION MAP 14

THIS MAP WAS PREPARED FOR TAX PURPOSES ONLY AND IS NOT TO BE REPRODUCED OR USED FOR SURVEYING OR CONVEYANCING.

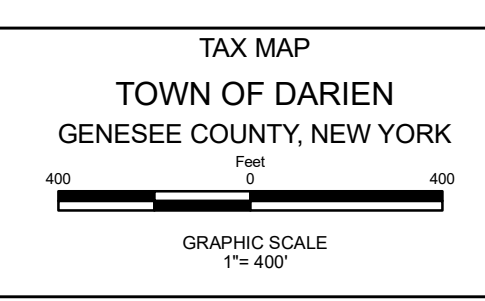
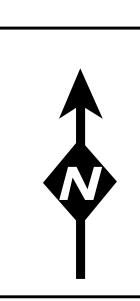
PREPARED BY  
**McINTOSH & McINTOSH, LAND SURVEYORS**  
 BATAVIA, NEW YORK  
 UNDER AUTHORITY OF  
**GENESEE COUNTY BOARD OF SUPERVISORS**  
Data converted to digital format August 2004, by Water Mapping  
 Map created using GCPM. Copyright 2007, Benjamin Associates.

REVISION TABLE		
DATE	MADE BY	CHANGES OR ADDITIONS
04/27/2010	JRG	SPLIT 13-1-28 INTO 28.1 & 28.2
12/03/2010	JRG	MERGE 13-1-12.2, 12.11 & 13 INTO 13-1-12.21
12/19/2014	JRG	RELOCATE 13-1-26.2 PER DEED
05/15/2017	JRG	MERGE 13-1-9.113 & 9.2 INTO 13-1-9.21
04/22/2019	JRG	SPLIT 13-1-30.111 INTO 13-1-40 & 13-1-41
07/14/2022	JRG	SPLIT 13-1-23.1 INTO 13-1-23.11 & 23.12
07/14/2022	JRG	MERGE 13-1-23.12 & 23.2 INTO 13-1-23.21

SPECIAL DISTRICTS	
FIRE	SCHOOL
DARIEN FIRE PROTECTION DISTRICT	ATTICA CENTRAL ALDEN CENTRAL

LEGEND	
PROPERTY LINE	---
ORIGINAL LOT LINE	---
RAILROAD	+
STREAM OR DITCH	~
ROAD OR RAILROAD BNDY	---
BLOCK LIMIT	---
GREAT LOT LINE	---
DENOTE COMMON OWNER	---
SCHOOL DISTRICT LINE	---
FIRE DISTRICT LINE	---
WATER DISTRICT LINE	---
SEWER DISTRICT LINE	---
EASEMENT	---

TAX MAP BLOCK No	①
TAX MAP PARCEL No	43-14-11
FILED PLAN LOT No	14
GREAT LOT No	(9)
CALCULATED ACREAGE	7.5(A)(C)
DEED ACREAGE	17.5(A)
SCALED DIMENSION	225 (8)
DEED DIMENSION	173.8



TAX MAP  
 TOWN OF DARIEN  
 GENESEE COUNTY, NEW YORK

**SECTION 13**

MAP DATE: March 2024