

THIS MAP WAS PREPARED FOR TAX PURPOSES ONLY AND IS NOT TO BE REPRODUCED OR USED FOR SURVEYING OR CONVEYANCING.

PREPARED BY
McINTOSH & McINTOSH, LAND SURVEYORS
 BATAVIA, NEW YORK
 UNDER AUTHORITY OF
GENESEE COUNTY BOARD OF SUPERVISORS
Data converted to digital format August 2004, by Water Mapping
 Map created using GCPM, Copyright 2007, Bergman Associates

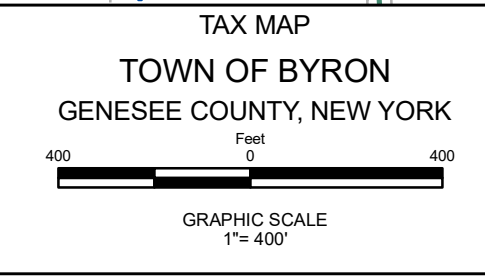
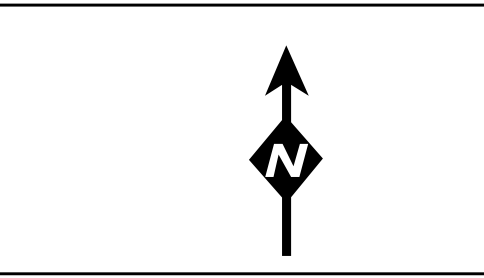
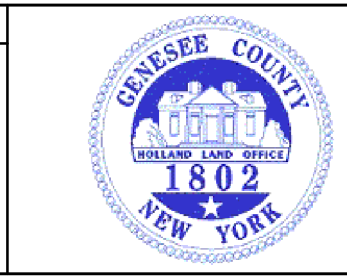
REVISION TABLE		
DATE	MADE BY	CHANGES OR ADDITIONS
01/31/2019	JRG	SPLIT 1-1-16.1 INTO 1-1-16.11 & 16.12

SPECIAL DISTRICTS	
FIRE	BYRON FIRE PROTECTION DISTRICT
SCHOOL	BYRON-BERGEN CENTRAL

PROPERTY LINE	---
ORIGINAL LOT LINE	- - - -
RAILROAD	+
STREAM OR DITCH	~ ~ ~ ~
ROAD OR RAILROAD BNDY	==
BLOCK LIMIT	---
GREAT LOT LINE	---
DENOTE COMMON OWNER	---

LEGEND	
SCHOOL DISTRICT LINE	---
FIRE DISTRICT LINE	---
WATER DISTRICT LINE	---
SEWER DISTRICT LINE	---
EASEMENT	---

TAX MAP BLOCK No	①
TAX MAP PARCEL No	43-14-11
FILED PLAN LOT No	14
GREAT LOT No	(9)
CALCULATED ACREAGE	7.5 A (C)
DEED ACREAGE	17.5 A
SCALED DIMENSION	225 (8)
DEED DIMENSION	173.8



TAX MAP
 TOWN OF BYRON
 GENESEE COUNTY, NEW YORK

SECTION 1-1

The 1 indicates this map displays Block 1 of this Map Section only.

MAP DATE: March 2024