

SEE SECTION MAP 10-2

CENTRAL SCHOOL DISTRICT NO. 1

NIAGARA-ADIRONDACK TIE LINE
(POWER AUTHORITY OF STATE OF NEW YORK)
(300.0' WIDE)

TOWN OF BYRON

NEW YORK CENTRAL LINES LLC

DUBLIN ROAD (49.5' WIDE)

WEST BERGEN ROAD (48' WIDE)

SEE SECTION MAP 14

SEE SECTION MAP 16

THIS MAP WAS PREPARED FOR TAX PURPOSES ONLY AND IS NOT TO BE REPRODUCED OR USED FOR SURVEYING OR CONVEYANCING.

McINTOSH & MINTOSH, LAND SURVEYORS
BATAVIA, NEW YORK
UNDER AUTHORITY OF
GENESEE COUNTY BOARD OF SUPERVISORS

Date converted to digital format: August 2004, by Water Mapping
Map created using GCPM. Copyright 2007, Bergman Associates

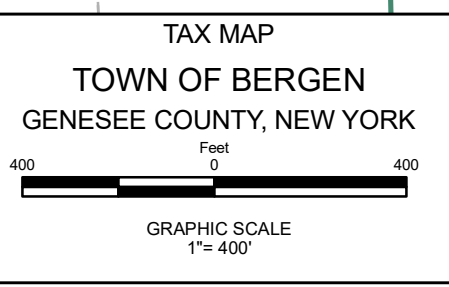
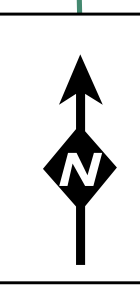
REVISION TABLE		
DATE	MADE BY	CHANGES OR ADDITIONS
10/21/2019	JRG	SPLIT 15-1-13.11 INTO 13.111, 13.112 & 27
04/19/2011	JRG	MERGE 15-1-13.112 & 13.21 INTO 15-1-13.211
09/23/2014	JRG	SPLIT 15-1-8.1 INTO 15-1-8.111, 8.112 & 8.12
02/22/2022	JRG	RESUB 15-1-8.111 & 8.12, RENUM AS 8.121 & 28
04/22/2022	JRG	MERGE 15-1-17.1 & 18.1 INTO 15-1-17.11

SPECIAL DISTRICTS	
FIRE	BERGEN FIRE DISTRICT
SCHOOL	BYRON-BERGEN CENTRAL
WATER	BYRON WATER DISTRICT # 2
	WATER IMPROVEMENT BENEFIT AREA # 1

PROPERTY LINE	---
ORIGINAL LOT LINE	---
RAILROAD	---
STREAM OR DITCH	---
ROAD OR RAILROAD BNDY	---
BLOCK LIMIT	---
GREAT LOT LINE	---
DENOTE COMMON OWNER	---

LEGEND	
SCHOOL DISTRICT LINE	---
FIRE DISTRICT LINE	---
RAILROAD DISTRICT LINE	---
SEWER DISTRICT LINE	---
EASEMENT	---

TAX MAP BLOCK No	①
TAX MAP PARCEL No	43-14-11
FILED PLAN LOT No	14
GREAT LOT No	(9)
CALCULATED ACREAGE	7.5 A(C)
DEED ACREAGE	17.5 A
SCALED DIMENSION	225 (8)
DEED DIMENSION	173.8



SECTION 15