

THIS MAP WAS PREPARED FOR TAX PURPOSES ONLY AND IS NOT TO BE REPRODUCED OR USED FOR SURVEYING OR CONVEYANCING.

PREPARED BY
McINTOSH & McINTOSH, LAND SURVEYORS
 BATAVIA, NEW YORK
 UNDER AUTHORITY OF
GENESEE COUNTY BOARD OF SUPERVISORS
Data converted to digital format August 2004, by Water Mapping
 Map created using GCPM, Copyright 2007, Bergmann Associates

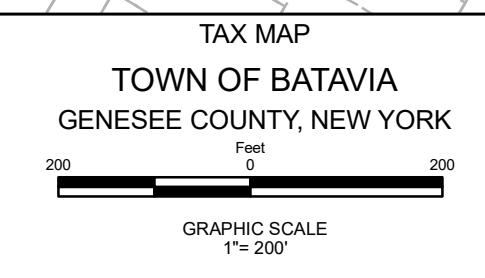
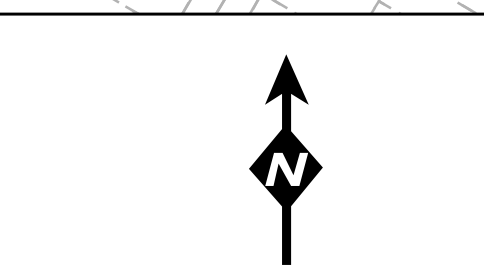
REVISION TABLE		
DATE	MADE BY	CHANGES OR ADDITIONS
01/06/2011	JRG	REVISE PARCELS ON SOUTH MAIN STREET
12/09/2011	JRG	MERGE 8-3-37.1 & 37.2 INTO 8-3-37.11
01/02/2013	JRG	MERGE 8-2-38, 46 & 47 INTO 8-2-38.1

SPECIAL DISTRICTS	
FIRE	BATAVIA FIRE PROTECTION DISTRICT
SCHOOL	BATAVIA CITY SCHOOLS
SEWER	BATAVIA SEWER DISTRICT NO. 2
WATER	BATAVIA WATER DISTRICT NO. 1
	BATAVIA WATER DISTRICT NO. 3

PROPERTY LINE	---
ORIGINAL LOT LINE	- - - - -
RAILROAD	+
STREAM OR DITCH	~ ~ ~ ~ ~
ROAD OR RAILROAD BNDY	==
BLOCK LIMIT	---
GREAT LOT LINE	---
DENOTE COMMON OWNER	---

LEGEND	
SCHOOL DISTRICT LINE	---
FIRE DISTRICT LINE	---
WATER DISTRICT LINE	---
SEWER DISTRICT LINE	---
EASEMENT	---

TAX MAP BLOCK No	①
TAX MAP PARCEL No	43-14-11
FILED PLAN LOT No	14
GREAT LOT No	(8)
CALCULATED ACREAGE	7.5 A (C)
DEED ACREAGE	17.5 A
SCALED DIMENSION	225 (8)
DEED DIMENSION	173.8



TAX MAP
 TOWN OF BATAVIA
 GENESEE COUNTY, NEW YORK

SECTION 8-Inset

An inset map magnifies parcels that aren't legible on the main Map Section.

MAP DATE: March 2024