

SEE SECTION  
MAP 2

SEE SECTION  
MAP 4

SEE SECTION  
MAP 7

THIS MAP WAS PREPARED FOR TAX PURPOSES ONLY AND IS NOT TO BE REPRODUCED OR USED FOR SURVEYING OR CONVEYANCING.

PREPARED BY  
**McINTOSH & McINTOSH, LAND SURVEYORS**  
BATON ROUGE, NEW YORK  
UNDER AUTHORITY  
OF  
**GENESSEE COUNTY BOARD OF SUPERVISORS**

Data converted to digital format August 2004, by Water Mapping  
Map created using GCPM, Copyright 2007, Esri/Map Associates

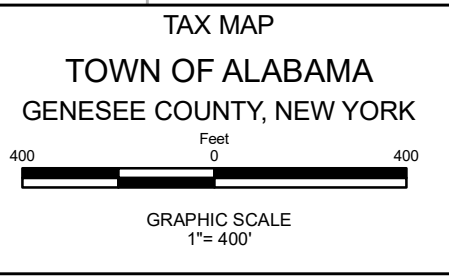
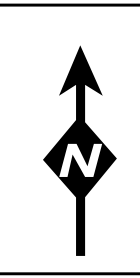
REVISION TABLE		
DATE	MADE BY	CHANGES OR ADDITIONS

SPECIAL DISTRICTS	
FIRE	ALABAMA FIRE PROTECTION
SCHOOL	OAKFIELD-ALABAMA CENTRAL

PROPERTY LINE	---
ORIGINAL LOT LINE	- - - -
RAILROAD	+ + + +
STREAM OR DITCH	~ ~ ~ ~
ROAD OR RAILROAD BNDY	— · — ·
BLOCK LIMIT	— · — ·
GREAT LOT LINE	— · — ·
DENOTE COMMON OWNER	└┘

LEGEND	
SCHOOL DISTRICT LINE	— · — ·
FIRE DISTRICT LINE	— · — ·
WATER DISTRICT LINE	— · — ·
SEWER DISTRICT LINE	— · — ·
EASEMENT	— · — ·

TAX MAP BLOCK No	①
TAX MAP PARCEL No	43-14-11
FILED PLAN LOT No	14
GREAT LOT No	(9)
CALCULATED ACREAGE	7.5 A (C)
DEED ACREAGE	17.5 A
SCALED DIMENSION	225 (8)
DEED DIMENSION	173.8



SECTION 3

TAX MAP  
TOWN OF ALABAMA  
GENESSEE COUNTY, NEW YORK