

ORLEANS COUNTY  
TOWN OF SHELBY

MEDINA  
CENTRAL SCHOOL  
OAKFIELD-ALABAMA  
CENTRAL SCHOOL

MEDINA  
CENTRAL SCHOOL  
OAKFIELD-ALABAMA  
CENTRAL SCHOOL

IROQUOIS  
NATIONAL WILDLIFE  
REFUGE

235.9A(C)  
1

9

371.6A(C)  
3

1

6

326.4A(C)  
4

3

140.4A(C)  
2

PART OF PARCEL 6-1-2

PART OF PARCEL 6-1-3

PART OF PARCEL 6-1-17

SEE SECTION  
MAP 6

SEE SECTION  
MAP 1

SEE SECTION  
MAP 3

ALLEGHANY ROAD (660' WIDE)

000000

THIS MAP WAS PREPARED FOR TAX PURPOSES ONLY AND IS NOT TO BE REPRODUCED OR USED FOR SURVEYING OR CONVEYANCING.

PREPARED BY  
MCINTOSH & MCINTOSH, LAND SURVEYORS  
BATON ROUGE, NEW YORK  
UNDER AUTHORITY  
OF  
GENESEE COUNTY BOARD OF SUPERVISORS  
Data converted to digital format August 2004, by Water Mapping  
Map created using GCPM, Copyright 2007, Bergmann Associates

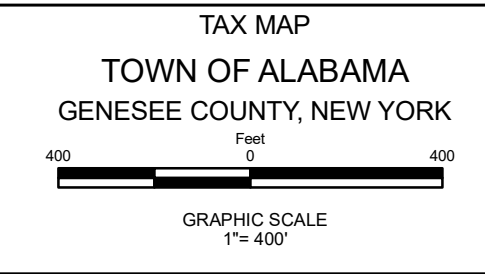
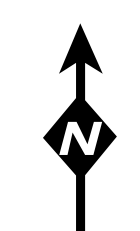
REVISION TABLE		
DATE	MADE BY	CHANGES OR ADDITIONS

SPECIAL DISTRICTS	
FIRE	ALABAMA FIRE PROTECTION
SCHOOL	OAKFIELD-ALABAMA CENTRAL

PROPERTY LINE	---
ORIGINAL LOT LINE	- - - - -
RAILROAD	+ + + + +
STREAM OR DITCH	~ ~ ~ ~ ~
ROAD OR RAILROAD BNDY	— · — · —
BLOCK LIMIT	— · — · —
GREAT LOT LINE	— · — · —
DENOTE COMMON OWNER	⌋

LEGEND	
SCHOOL DISTRICT LINE	⊖
FIRE DISTRICT LINE	⊖
WATER DISTRICT LINE	⊖
SEWER DISTRICT LINE	⊖
EASEMENT	---

TAX MAP BLOCK No	①
TAX MAP PARCEL No	43-14-11
FILED PLAN LOT No	14
GREAT LOT No	(9)
CALCULATED ACREAGE	7.5 A (C)
DEED ACREAGE	17.5 A
SCALED DIMENSION	225 (8)
DEED DIMENSION	173.8



SECTION 2