



THIS MAP WAS PREPARED FOR TAX PURPOSES ONLY AND IS NOT TO BE REPRODUCED OR USED FOR SURVEYING OR CONVEYANCING.

PREPARED BY  
**MUNTOSH & MONTOSH, LAND SURVEYORS**  
 BATAVIA, NEW YORK  
 UNDER AUTHORITY OF  
 GENESSEE COUNTY BOARD OF SUPERVISORS  
Data collected from 11-digit parcel block, August 2014, to Parcel Mapping  
 Map created using GISPro, Copyright 2007, Esri/Map Associates

REVISION TABLE			REVISION TABLE		
DATE	MADE BY	CHANGES OR ADDITIONS	DATE	MADE BY	CHANGES OR ADDITIONS

REVISION TABLE			REVISION TABLE		
DATE	MADE BY	CHANGES OR ADDITIONS	DATE	MADE BY	CHANGES OR ADDITIONS

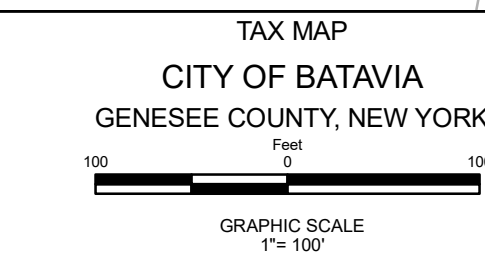
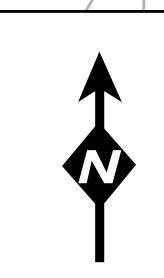
SPECIAL DISTRICTS	
FIRE SCHOOL	NO TAXABLE FIRE BATAVIA CITY SCHOOLS

PROPERTY LINE	ORIGINAL LOT LINE	RAILROAD	STREAM OR DITCH	ROAD OR RAILROAD BNDY	BLOCK LIMIT	GREAT LOT LINE	DENOTE COMMON OWNER
—	- - - -	—+—+—	— · — · —	—+—+—	—+—+—	—+—+—	—+—+—

LEGEND	
SCHOOL DISTRICT LINE	—+—+—
FIRE DISTRICT LINE	—+—+—
WATER DISTRICT LINE	—+—+—
SEWER DISTRICT LINE	—+—+—
EASEMENT	—+—+—

TAX MAP BLOCK No	43-14-11
TAX MAP PARCEL No	14
FILED PLAN LOT No	30
GREAT LOT No	7.9 A (C)
CALCULATED ACREAGE	175.6
DEED ACREAGE	228.05
SCALED DIMENSION	173.5
DEED DIMENSION	

071.14		
071.14	<b>071.15</b>	
071.18	071.19	071.19



TAX MAP  
 CITY OF BATAVIA  
 GENESSEE COUNTY, NEW YORK

**SECTION 071.15**

MAP DATE: March 2024