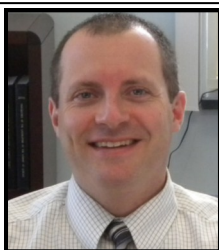




GENESEE COUNTY PROBATION DEPARTMENT NEWSLETTER

VOLUME 8: ISSUE 1 JANUARY 2015

STAFF LISTING



Timothy Michalak
Probation Director II
Ext. 2270



Kevin Wright
Probation Supervisor
TAC Coordinator
Ext. 2271

Rachel Sanfratello
Probation Supervisor
Transfer Designee
Ext. 2252



Michele Tucci
Sr. Probation
Officer
Ext. 2262



Jeremy Barber
Sr. Probation
Officer
Ext. 2259



Kevin Forsyth
Sr. Probation
Officer
Ext. 2273



Traci Russo
Probation Officer
Ext. 2265



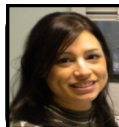
Sarah Welker
Probation Officer
Ext. 2274



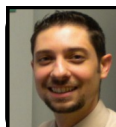
Matthew Garber
Probation Officer
Ext. 2283



William Bogan
Probation Officer
Ext. 2309



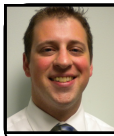
Carly Luttrell
Probation Officer
Ext. 2272



Jason Mindler
Probation Officer
Ext. 2254



Terri Buchholz
Probation Officer
Ext. 2216



Benjamin Heale
Probation Officer /
Trainee
Ext. 2263

Vicki Athoe
Principal Clerk
Ext. 2257



Carrie Everett
Principal Financial Clerk
Ext. 2255

Contact Information:

Genesee County Probation Department
County Building No.1,
15 Main Street, Batavia, NY 14020
(585)344-2550, Ext 2255
probation@co.genesee.ny.us



The Mission of the Genesee County Probation Department is to enhance the safety of victims and communities through the fair and effective supervision of community-based offenders, community partnerships, and results-driven management practices.

INSIDE THIS ISSUE:

| | |
|---|---|
| STAFF LISTING | 1 |
| FAVORITE PROBATIONER QUOTES | 2 |
| SOCIAL MEDIA FOR PUBLIC INSTITUTIONS | 2 |
| “STILL” IN BUSINESS | 3 |
| GENESEE COUNTY PROBATION’S MOST WANTED & CAPTURED | 3 |
| ON THE WEB & FACEBOOK | 3 |
| DIRECTOR’S CORNER | 4 |
| EMPLOYEE NEWS | 4 |
| GCPD IN THE NEWS | 4 |

Favorite Probationer Quotes



PO Russo's client reported as directed and was told she would be taking a drug test.

"I might as well tell you," said the client, "I was working on my trailer the other day and I was in a lot of pain."

"So...you took something?" asked PO Russo.

"I took some Heroin." replied the client.

"You know, most of us just take Ibuprofen." said PO Russo.

Submitted by PO Traci Russo

As reported by treatment agency: Probationer is given a clear plastic vial with a white cap for a drug test. When she comes out of the bathroom she hands over the sample—in a white vial with a blue cap.

Note to Probationer: Make sure you submit your sample in the same vial you are given.

Submitted by PO Traci Russo

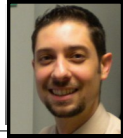
On a recent home visit, a person was spotted running from the house who was believed to be the probationer.

When confronted regarding his running from the house, he adamantly denied the incident.

At his next reporting visit, he showed up with his attorney and offered a receipt from Rite Aid dated for the exact date and time that the running incident occurred as proof it wasn't him.

The problem for him was that the receipt was for a 12-pack of beer and the probationer has **no-alcohol** conditions.

Submitted by PO Traci Russo



SOCIAL MEDIA FOR PUBLIC INSTITUTIONS

SUBMITTED BY JASON R. MINDLER, PROBATION OFFICER

In a time when public agencies struggle to accomplish more goals with fewer resources, establish an identity with the public they serve and find more effective ways to communicate with their clients, it is no surprise many agencies have turned to the internet to accomplish these goals. Many agencies have long-established web pages, providing a static information center which reads like an expanded yellow pages listing: telephone numbers, office hours and agency mission statements. However, the ever-increasing availability of web access and the proliferation of handheld web-capable devices have driven many people to desire a more engaging way to deal with these agencies.

Enter social media. This title is a fluid description for any application or website which provides information while gaining information in the process. Social media is not new and the popular sites Myspace and Facebook are now over a decade old. As the use of these social sites expands, it makes sense to use them to communicate with the public we serve. They are cost-effective, accessible and engaging ways to share vital information while gaining rapid feedback. The questions that face an agency when deciding to develop a social media presence may seem daunting but there are a few simple steps to

take.

First, it is important to determine what you want to get out of your agency's social media presence. Decide if it is to display information regarding your available services, share images of community events, engage in dialogue with community members or all of the above.

Second, make a determination which social media outlets best suit your agency's style and needs. With sites designed primarily for networking, photo sharing, short typed messages or videos, it is important to learn from your clients which sites best suit their needs.



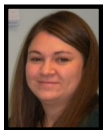
Third, develop a policy that defines the type of communication you intend to share and how to address information shared with your agency through the social media. Social media is not the place to share confidential information or display topics which are not casting your agency in a positive light. Likewise, it is important to understand your presence may attract citizens who are critical of the type or quality of work you do. Have a plan in place to address critics in an appropriate matter and understand that social media outlets are considered public forums, and censoring guest posts can open doors to potential liability. Use the op-

portunity to demonstrate your agency can handle criticism in a positive and professional manner.

Fourth, engage staff members to participate at a level with which they are personally comfortable. If your agency appoints an individual to monitor and update your social media outlets, make sure someone else has been given access, and make sure the site and login information is kept secure. Make sure staff members are aware of any posts that may affect the way they perform their job and give everyone information so that they are not surprised by questions regarding the social media outlet.

Fifth, use the feedback received from your social media outlets to refine your presence and focus on the most effective forms of communication. If you try one application and it doesn't provide the type of presence you hoped for, try something else. Some sites provide user feedback tools which help you keep track of page visits, new friends or ideas to increase your reach.

Social media is not a replacement for any of the communication methods agencies already use, but you may find that adopting a social media presence enhances your communication with different demographics, opens lines of communication and allows you to share your good work with the community.



“STILL” IN BUSINESS

BY TERRI BUCHHOLZ, PROBATION OFFICER

Moonshine, white lightning, mountain dew, hooch and white whiskey are terms used to describe high-proof distilled spirits, generally produced illicitly. Moonshine is typically made with corn mash as the main ingredient. The word “Moonshine” is believed to derive from the term “moonrakers” used for early English smugglers and the clandestine nature (i.e. by the light of the moon) of the operations of illegal Appalachian distillers who produced and distributed whiskey.” (Wikipedia.org)

generated income from “Moonshining.”

Fast forward to December of 2011 when the Discovery Channel premiered a docudrama series called “Moonshiners” fea-



unscheduled early morning visit to the home of a felony DWI probationer. He blew positive for alcohol and stated he had been drinking at home the night before. In his basement we found a shelf full of empty beer cans and his copper moonshine still.

Apparently you really can find anything on eBay as this is where he had purchased the still. The offender stated that he knew it was illegal to use the still to manufacture moonshine, but was curious after watching the show, “Moonshiners”.

turing the lives of people who produce illegal moonshine in the Appalachian Mountains.

It was only a matter of time before the idea sparked interest in the general public. On October 26, 2014, myself and PO Bill Bogan made an

Unfortunately for this offender, his curiosity earned him a visit from the Sheriff’s Department, a subsequent arrest and Violation of Probation.

WE’RE ON THE WEB!
WWW.CO.GENESEE.NY.US/
DPT/PROBATION



PROTECTING GENESEE COUNTY

GENESEE COUNTY PROBATION’S MOST WANTED

WANTED
by Genesee County Probation Department

Michelle Richmond
For Violation of Probation (DWI 1605)

Contact Genesee Co Probation 585-344-2550 Ext. 2257 with information

WANTED
by Genesee County Probation Department

James H. Rowcliffe
For Violation of Probation (DWI)

Contact Genesee Co Probation 585-344-2550 Ext. 2257 with information

WANTED
by Genesee County Probation Department

John J. Smalley
For Violation of Probation (GENERAL ENHANCEMENT, 2)

Contact Genesee Co Probation 585-344-2550 Ext. 2257 with information

WANTED
by Genesee County Probation Department

David L. Williams
For Violation of Probation (GENERAL DWI 1605)

Contact Genesee Co Probation 585-344-2550 Ext. 2257 with information

WANTED
by Genesee County Probation Department

Rodney Laframboise
For Violation of Probation (DWI)

Contact Genesee Co Probation 585-344-2550 Ext. 2257 with information

WANTED
by Genesee County Probation Department

Edilser Vasquez (alias)
For Violation of Probation (DWI)

Contact Genesee Co Probation 585-344-2550 Ext. 2257 with information

WANTED
by Genesee County Probation Department

Harvey J. Horton
For Violation of Probation (DWI)

Contact Genesee Co Probation 585-344-2550 Ext. 2257 with information

WANTED
by Genesee County Probation Department

David L. Andrews
For Violation of Probation (PETIT LARCENY)

Contact Genesee Co Probation 585-344-2550 Ext. 2257 with information

CAPTURED

Jason L. Perry
For Violation of Probation (CRIMINAL CONTEMPT)

Contact Genesee Co Probation 585-344-2550 Ext. 2257 with information

CAPTURED

Monique L. Brairton
For Violation of Probation (DWI)

Contact Genesee Co Probation 585-344-2550 Ext. 2257 with information

CAPTURED

Joshua R. Radley
For Violation of Probation (UNLAWFUL GROWING CANNABIS)

Contact Genesee Co Probation 585-344-2550 Ext. 2257 with information

CAPTURED

Joseph Bennett
For Violation of Probation (PETIT LARCENY (CSP))

Contact Genesee Co Probation 585-344-2550 Ext. 2257 with information

CAPTURED

Justin L. Fyatt
For Violation of Probation (PETIT LARCENY)

Contact Genesee Co Probation 585-344-2550 Ext. 2257 with information

CAPTURED

Mary A. Brairton
For Violation of Probation (DWI, PEANUT)

Contact Genesee Co Probation 585-344-2550 Ext. 2257 with information

CAPTURED

Douglas S. Sprague
For Violation of Probation (MINOR CONTEMPT, 1st)

Contact Genesee Co Probation 585-344-2550 Ext. 2257 with information

CAPTURED

Douglas S. Sprague
For Violation of Probation (MINOR CONTEMPT, 1st)

Contact Genesee Co Probation 585-344-2550 Ext. 2257 with information

EMPLOYEE NEWS



DIRECTOR'S CORNER BY TIMOTHY J. MICHALAK, PROBATION DIRECTOR

Calendar year 2014 was a year of progress for the Probation Department. During this past year we worked cohesively with our criminal justice partners to deliver higher quality and more cost effective services. Our Department connected with our local Drug Task Force to enhance our ability to fight drug crime in our community, and we continue to seek out and implement additional ways our Department can assist with the management of the County Jail population. The Probation Department continues to partner with local law enforcement for special details, and all of our officers completed their annual required 21 hours of training.

In 2014, Probation Officers in Genesee County prepared 678 Investigations for the Courts and also received 377 new cases on Probation. As a Department we have re-established and are utilizing a flexible work schedule which has allowed our officers greater ability to conduct quality field contacts during "non-traditional" business hours with no increase in payroll expenses. Mid year we filled our final Probation Officer vacancy to become fully staffed although at press time a Probation Officer position became open. We anticipate hiring for that position quickly from a civil service list of eligible candidates. A new Probation Officer test will be offered in May.

As a Department we are looking forward to 2015 and have many goals including enhancing DWI offender supervision through STOP DWI funds and implementing cognitive behavioral interventions for our offender population. Probation remains one of the most cost effective alternatives to incarceration programs in New York State. This Department continues to identify the greatest risk offenders and allocate resources appropriately. The criminogenic needs of these offenders are continually assessed in an attempt to change offender behavior and reduce recidivism. As the Director of the Genesee County Probation Department, I feel fortunate to have a dedicated staff that works tirelessly to ultimately enhance the safety of our community.



Christmas 2014

The Probation Department celebrated the holidays with a Christmas Luncheon on 12/18/14. In addition the Department collected \$300 for the Salvation Army to sponsor a Veteran and his family for the holidays!

Decorative border of small squares surrounding a central blue box.

Welcome

**Welcome to our
new Probation Officer Trainee
Ben Heale!**

GENESEE COUNTY PROBATION DEPARTMENT IN THE NEWS

The Batavian

Law and Order: Man accused of possessing assault-style rifle, illegal magazine

Submitted by Howard Owens on September 25, 2013 - 10:38am

Brett William Snyder, 50, of Batavia Stafford Town-line Road, Stafford, is charged with two counts of third-degree criminal possession of a weapon (assault weapon and magazine). Following a check on Snyder's residence by the Probation Department, a probation officer contacted the Sheriff's Office for assistance in the investigation of an alleged illegal firearm at the residence. Snyder was allegedly found in possession of a assault-style weapon and a large capacity magazine. Snyder was arraigned, posted \$250 bail and was released.