

Genesee County Park & Forest Interpretive Nature Center
Reservation Information for
Meetings/Conferences/Events/Private Gatherings





**GENERAL INFORMATION
FOR INTERPRETIVE CENTER USE**
GENESEE COUNTY DEPARTMENT OF PARKS, RECREATION & FORESTRY
 153 CEDAR STREET, BATAVIA, NY 14020
 Phone (585) 344-8508 – Administration/Reservations/Parks Supervisor
 Fax (585) 343-9303
 Phone (585) 344-1122 – Interpretive Nature Center/Environmental Educator
 Website: www.geneseeny.gov

Timothy Hens, PE
 Commissioner
 Paul Osborn
 Deputy Commissioner
 Claudia Nusstein
 Conservation Education
 Program Coordinator

Park Hours of Operation: October – April (9:00am-5:00pm), May – September (9:00am-9:00pm)

- The building is **not** available during winter holidays which include: Columbus Day, Veterans Day, Thanksgiving, Christmas, New Years Day, Dr. Martin Luther King Jr. Birthday, President’s Day.
- All “Rules and Regulations” for Genesee County Parks and Recreation Areas must be followed at all times.

Emergencies

- In case of an emergency a phone is available in the Office and in the Lab Room (Kitchenette) TO DIAL 9-1-1. A fire extinguisher is located on each floor of the building. One in the main display room on the wall to the left of the main doors and the other is located on the wall next to the Lab room interior door.

Interpretive Nature Center Highlights

- The Interpretive Nature Center is located within the beautiful scenery of the Genesee County Park and Forest. This post and beam structure sets on the western part of the park overlooking a meadow and a 4-acre wetland. Visitors often view deer, rabbits, turkeys, and other wildlife from the elevated rear porch. The building is home to the Park’s environmental education programs as well as many other public functions. Along with the meeting spaces the building includes public restrooms, interactive environmental displays, a lab room with countertops and refrigerator, and a small display room. The building is completely handicap accessible and child friendly. Adjacent to the Center is an outdoor composting display, ACORNS Outdoor Learning Center, and a large lawn area for people to enjoy the outdoors on picnic tables. There is plenty of parking available for up to 150 cars.
- The Interpretive Nature Center allows business meetings, training sessions, environmental programs, conferences, seminars, and special events. It is not open to weddings or receptions. Caterers are allowed but must have health department approval. All Park “Rules and Regulations” and “Facility Use Requirements” must be followed at all times. Courtesy must be given to all users. Access to the basement during non-public hours is required through the exterior rear doors by using the handicap accessible concrete walkway.
- The building is open to the general public year round Thursday - Saturday 10:00 am – 4:00 pm and on Sunday 12:00 – 4:00pm. The building is not available during winter holidays which include: Columbus Day, Veterans Day, Thanksgiving, Christmas, New Years Day, Dr. Martin Luther King Jr. Birthday, Presidents. Hours are subject to change as needed.
- Alcohol is not permitted in the facility at any time. Clean-up must begin ½ hour before the park closes, unless arrangements have been made prior to the scheduled activity.

Interpretive Nature Center Rental Fees

The **ENTIRE** building can be rented for \$300.00 depending upon scheduled activities and proposed events.

Location	Amenities Available	Size	# People	\$	Dates Available
Discovery Zone	Carpeted, projection screen, whiteboard, seating for 8 at table, perimeter seating for 10. Located on 1 st floor.	552 Sq ft	8-20	\$50.00	Jan1 – Dec 31
Activity Room	Folding tables and chairs for 40 people, vinyl floor, perimeter seating for 15, and whiteboard projection wall. Classroom style seating for 50. Located in the lower level.	1100 Sq ft	40-50	\$150.00	Jan1 – Dec 31
Classroom	Concrete floor, projection screen, whiteboard, classroom style seating for 25. Located in the lower level.	540 Sq ft	25-30		

Interpretive Center Reservation General Information for Private Parties

1. Must use the Rear Entrance of Building to access Lower Level
2. Main floor is open Sat. & Sun. 12:00pm-4:00pm during winter months. Sat. 10:00am-4:00pm and Sun. 12:00pm-4:00pm during Summer months.
3. Stove and TV are NOT available to Private Parties
4. All Garbage shall be put in respective containers and will be removed by Park Staff.
5. Leave building as you found it: Pick up and wipe down all tables and countertops.
6. If there is an issue, please notify Park Staff/Volunteer IMMEDIATELY

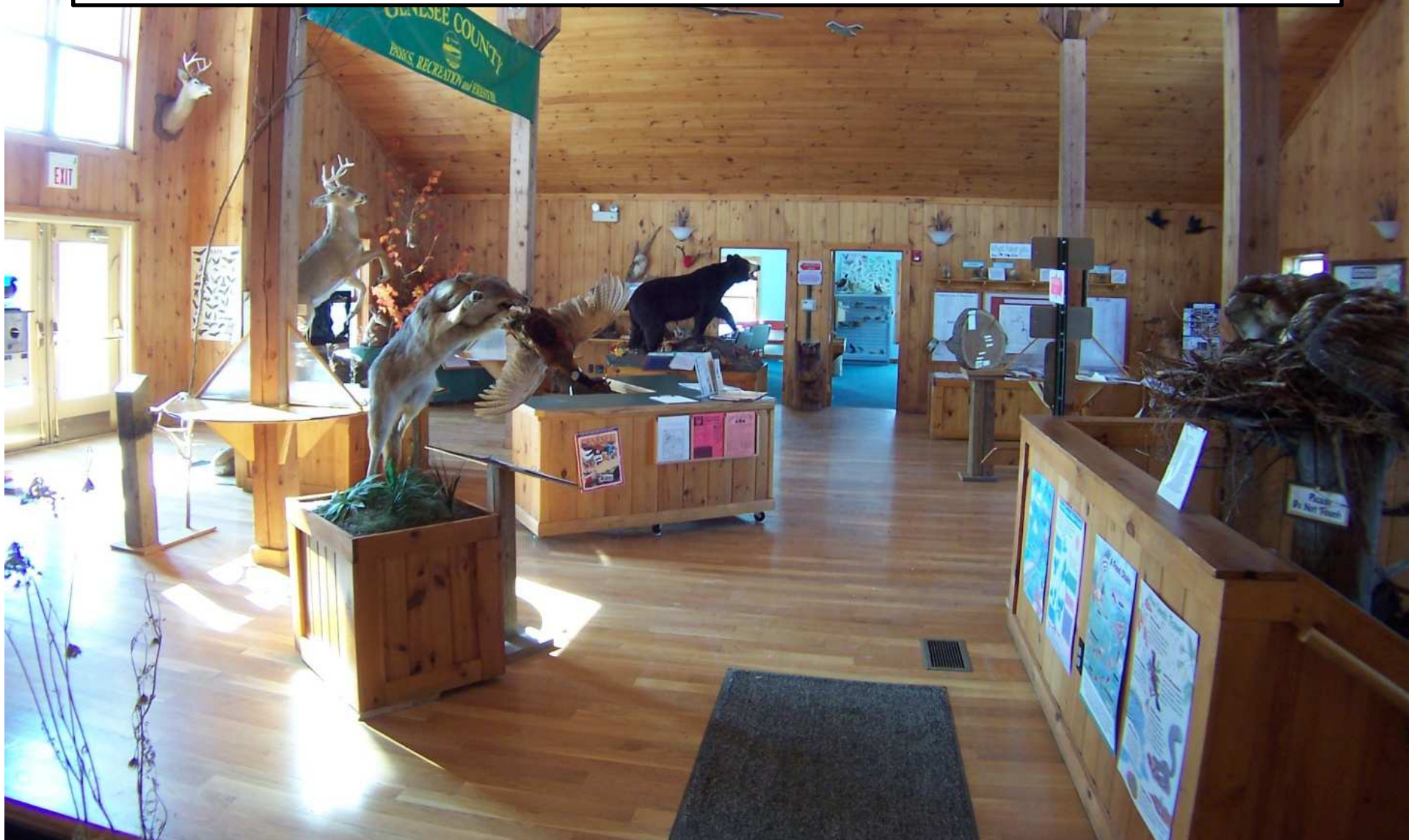
Genesee County Park & Forest Interpretive Nature Center - Main Display Room



Genesee County Park & Forest Interpretive Nature Center - Main Display Room



Genesee County Park & Forest Interpretive Nature Center - Main Display Room



Genesee County Park & Forest Interpretive Nature Center
- Discovery Zone – Meeting Arrangement – 8 People



Genesee County Park & Forest Interpretive Nature Center - Discovery Zone



Genesee County Park & Forest Interpretive Nature Center - Discovery Zone



Genesee County Park & Forest Interpretive Nature Center - Kitchenette



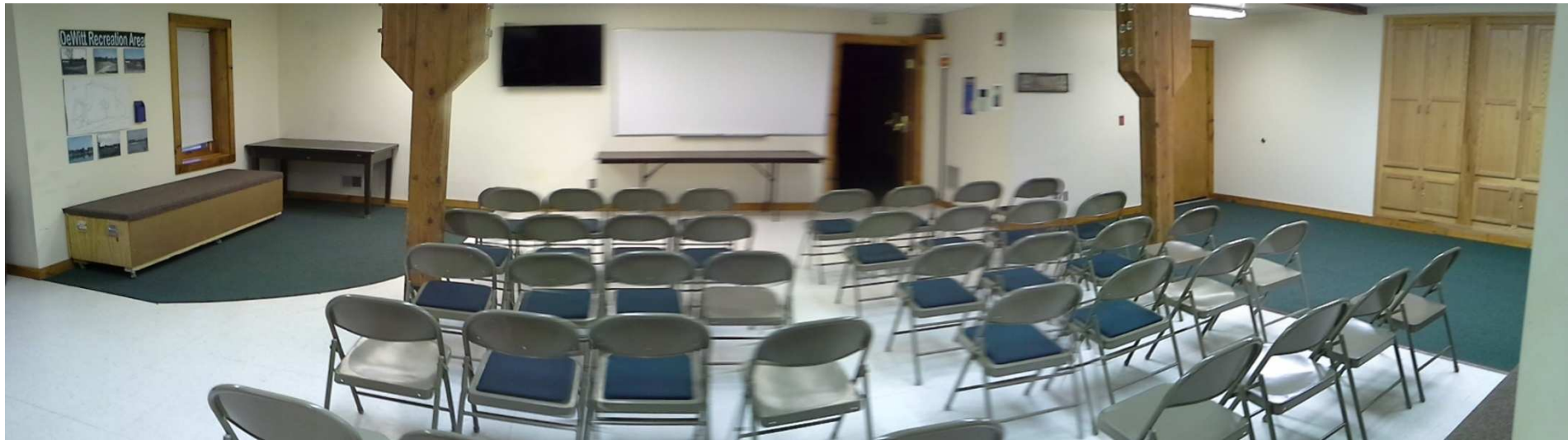
Genesee County Park & Forest Interpretive Nature Center
- Winter Sides – Rear Basement Entrance



Genesee County Park & Forest Interpretive Nature Center
- Activity Room -
Seating Arrangement #1 – Classroom Style – All Chairs – 40 People



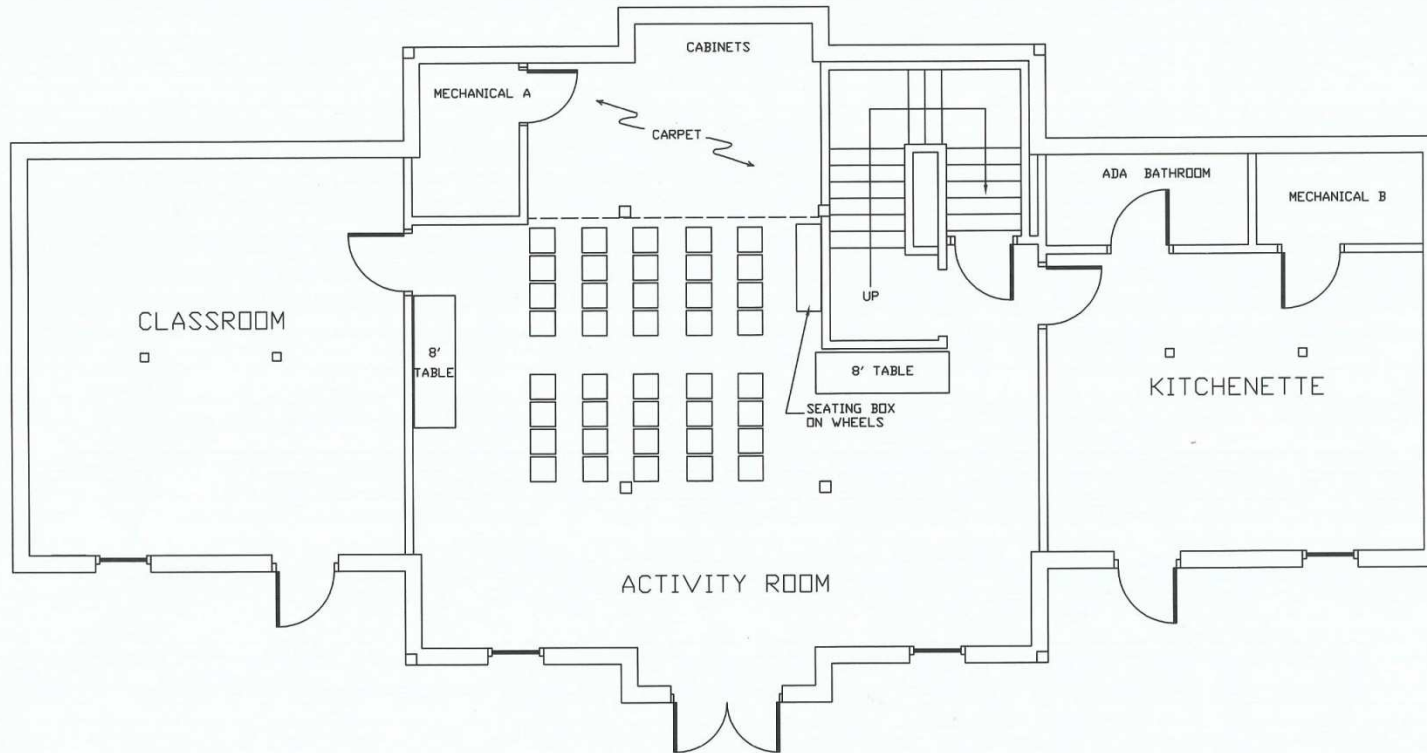
Genesee County Park & Forest Interpretive Nature Center
- Activity Room -
Seating Arrangement #1 – Classroom Style – All Chairs – 40 People



Genesee County Park & Forest Interpretive Nature Center
- Activity Room -
Seating Arrangement #1 – Classroom Style – All Chairs – 40 People

INTERPRETIVE CENTER – SEATING ARRANGEMENT #1

CLASSROOM STYLE – ALL CHAIRS – 40 PEOPLE



LOWER-LEVEL BASEMENT

Genesee County Park & Forest Interpretive Nature Center
- Activity Room -
Seating Arrangement #2 – Classroom Style – Tables & Chairs – 32 People

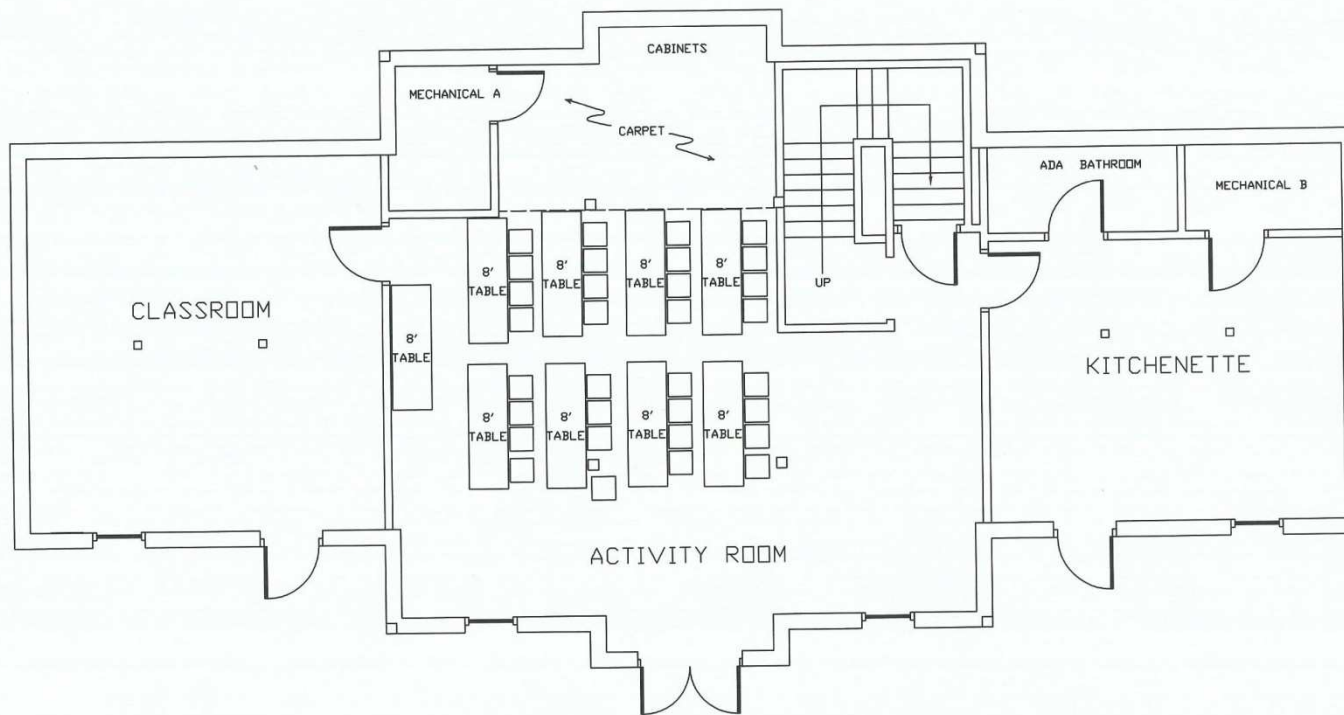


Genesee County Park & Forest Interpretive Nature Center
- Activity Room -
Seating Arrangement #2 – Classroom Style – Tables & Chairs – 32 People



Genesee County Park & Forest Interpretive Nature Center
- Activity Room -
Seating Arrangement #2 – Classroom Style – Tables & Chairs – 32 People

INTERPRETIVE CENTER – SEATING ARRANGEMENT #2
CLASSROOM STYLE – TABLES & CHAIRS – 32 PEOPLE



LOWER-LEVEL BASEMENT

Genesee County Park & Forest Interpretive Nature Center

- Activity Room -

Seating Arrangement #3 – Conference/Meeting – Large Rectangle – 26 People



Genesee County Park & Forest Interpretive Nature Center

- Activity Room -

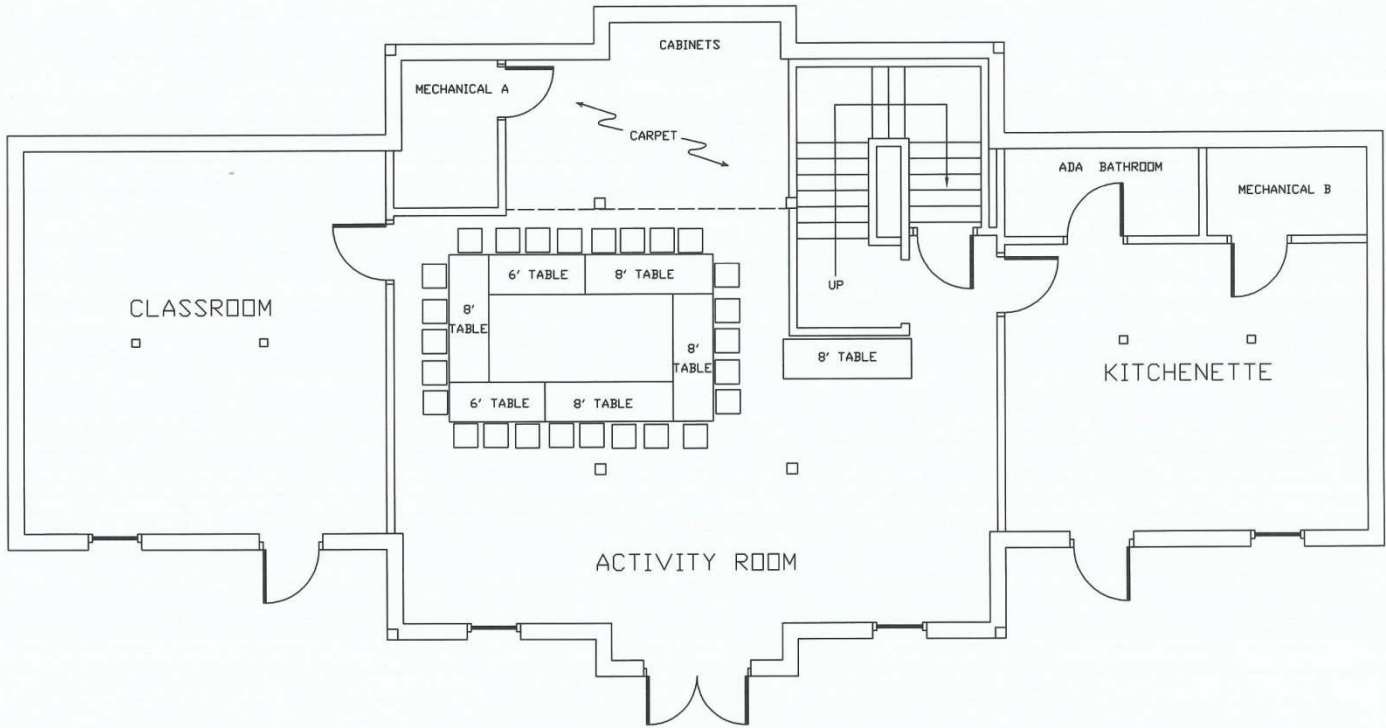
Seating Arrangement #3 – Conference/Meeting – Large Rectangle – 26 People



Genesee County Park & Forest Interpretive Nature Center
- Activity Room -
Seating Arrangement #3 – Conference/Meeting – Large Rectangle – 26 People

INTERPRETIVE CENTER - SEATING ARRANGEMENT #3

CONFERENCE/MEETING-LARGE RECTANGLE-26 PEOPLE



LOWER-LEVEL BASEMENT

Genesee County Park & Forest Interpretive Nature Center

- Activity Room -

Seating Arrangement #4 – Conference/Meeting – Small Rectangle – 20 People

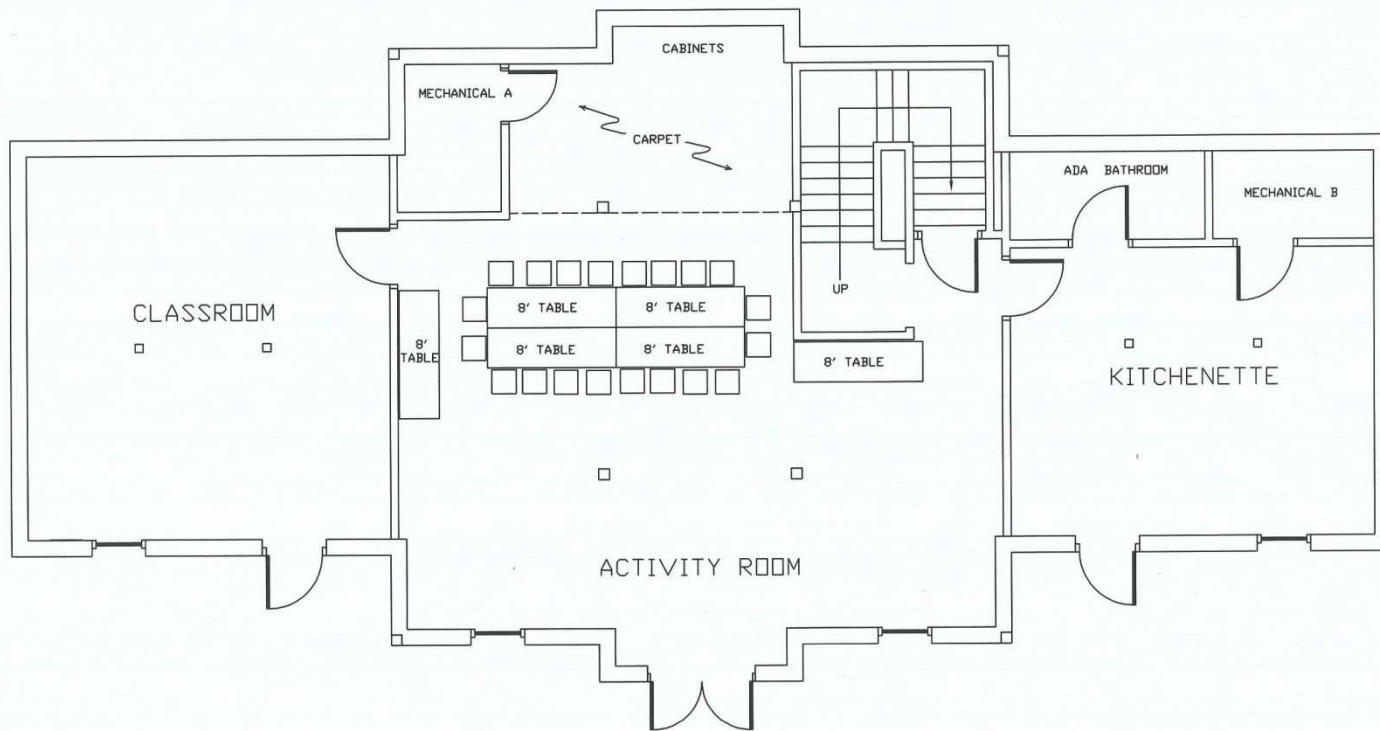


Genesee County Park & Forest Interpretive Nature Center - Activity Room -

Seating Arrangement #4 – Conference/Meeting – Small Rectangle – 20 People

INTERPRETIVE CENTER – SEATING ARRANGEMENT #4

CONFERENCE/MEETING–SMALL RECTANGLE–20 PEOPLE



LOWER-LEVEL BASEMENT

Genesee County Park & Forest Interpretive Nature Center
- Activity Room -
Seating Arrangement #5 – Private Gathering – Tables & Chairs – 36 People



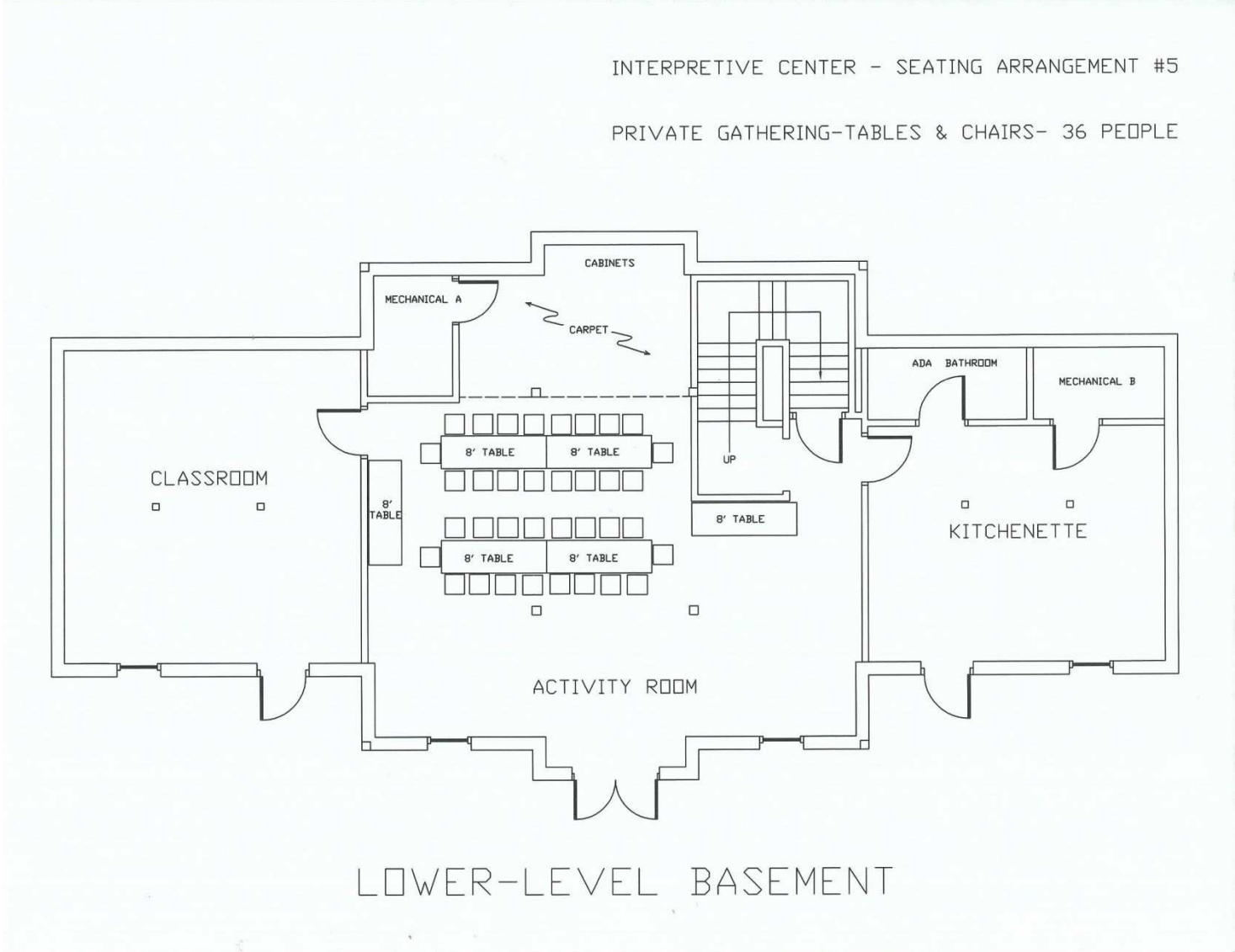
Genesee County Park & Forest Interpretive Nature Center

- Activity Room -

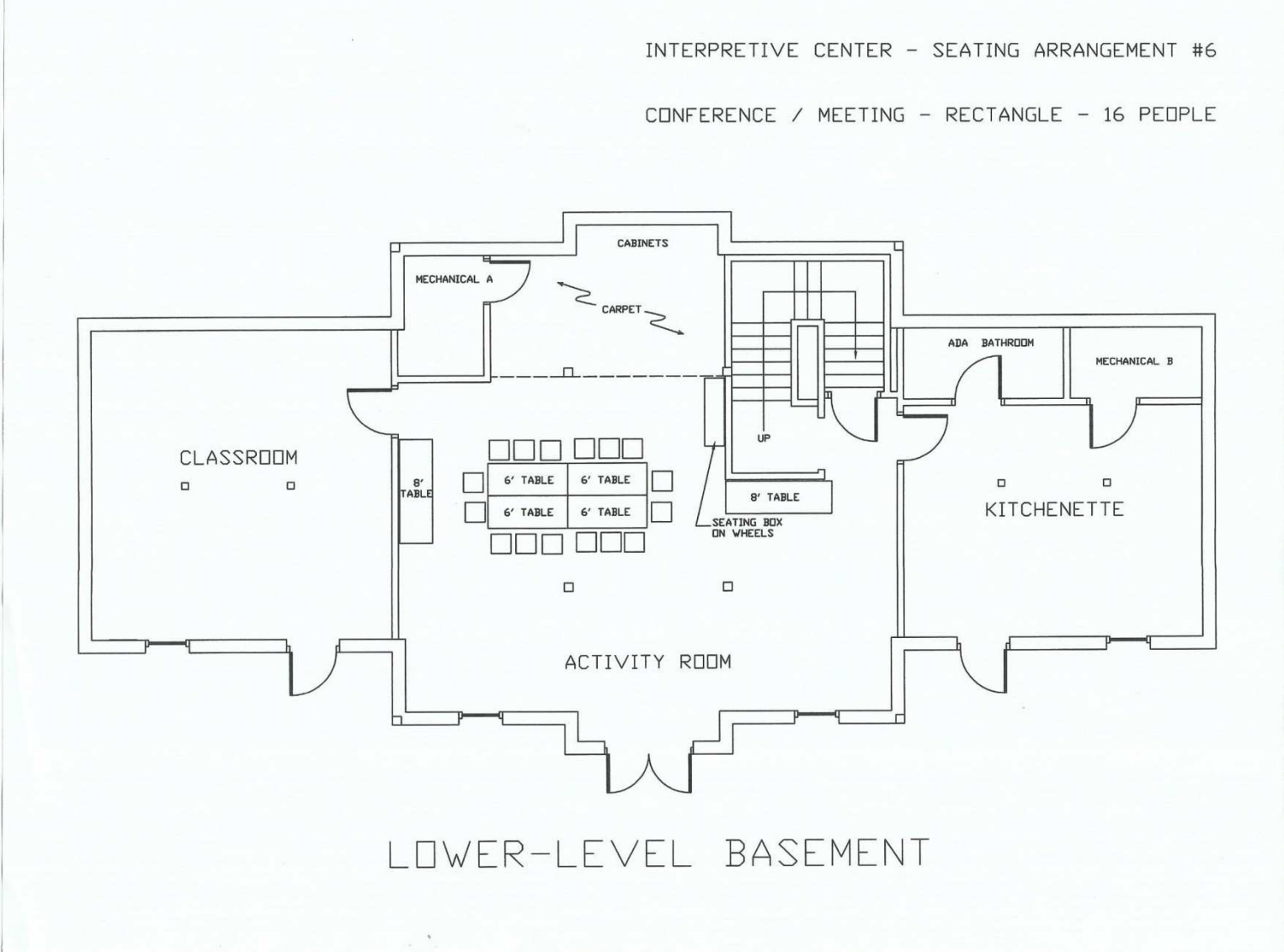
Seating Arrangement #5 – Private Gathering – Tables & Chairs – 36 People



Genesee County Park & Forest Interpretive Nature Center
- Activity Room -
Seating Arrangement #5 – Private Gathering – Tables & Chairs – 36 People



Genesee County Park & Forest Interpretive Nature Center
- Activity Room -
Seating Arrangement #6 – Conference/Meeting – Rectangle – 16 People



Genesee County Park & Forest Interpretive Nature Center
- Activity Room -
Seating Arrangement #8 – Conference/Meeting/Training – Lge Rectangle
w/outside tables – 38 People



Genesee County Park & Forest Interpretive Nature Center
- Activity Room -
Seating Arrangement #9 –Training –Horseshoe – 30 People

